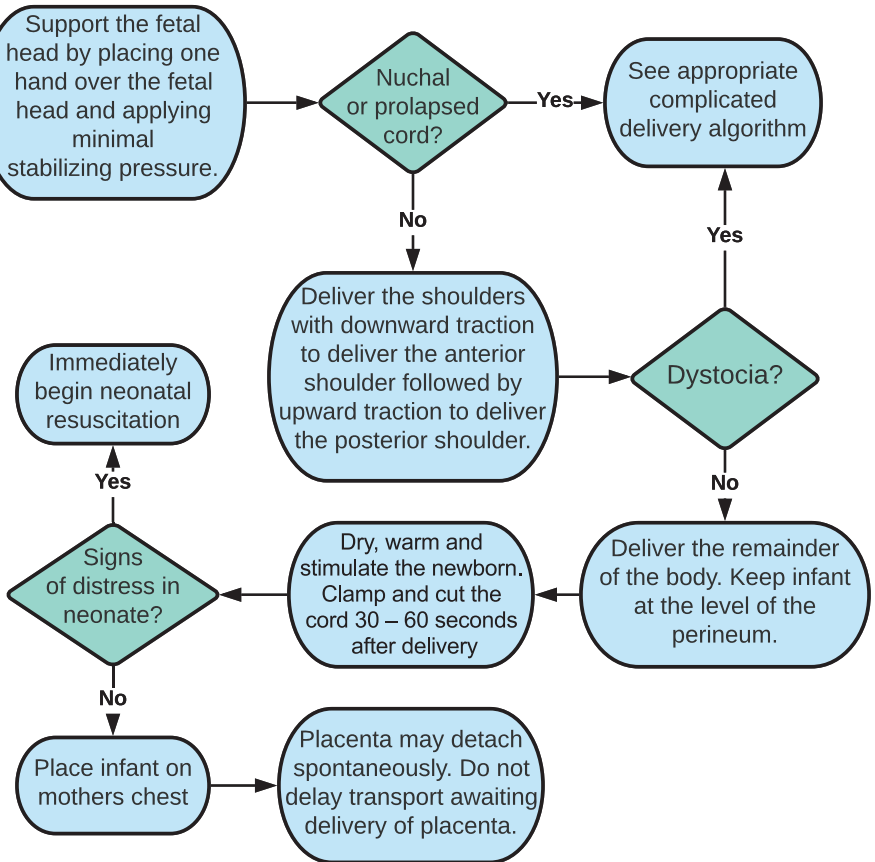


# Uncomplicated Newborn Delivery



# Uncomplicated Newborn Delivery

## Important History

- Estimated due date?
- Does the mother feel the urge to push?
- Are there twins or triplets?
- Is there a history of vaginal bleeding?

## Signs of Imminent Delivery

- crowning or presentation of a fetal part in the vaginal opening
- the mother's urge to push
- mother's sense of imminent delivery

## Managing the Placenta

- Do not put traction on the cord
- Allow placenta to deliver spontaneously
- Do not delay transport awaiting placenta
- Save placenta in bag for the hospital team

## Postpartum Hemorrhage Management

- Fundal massage
- Crystalloid administration
- Pack visible perineal lacerations with gauze